

MODEL 109E

Hydrarol™ High-Speed Insulated Rigid Roll-Up Door System



Bold Innovation. Superior Design. Unsurpassed Quality.

THE INDUSTRY'S UNPARALLELED DOOR SYSTEM OF CHOICE

Cleanseal's rigid roll-up door is designed, engineered and precision manufactured with over 20 years of experience partnering with the leading pharmaceutical companies and architects across the country. The Excel Hydrarol roll-up door with its rigid, insulated slats, reliable, high speed operation and attractive, low profile design, provides exceptional security while maintaining one of the smallest footprints in the industry.

Using cutting-edge technology and exacting criteria for quality, these doors have surpassed market demands. Our quest for uncompromising quality, and our steadfast commitment to meet our customer's ever-changing expectations, is evident in one of the most durable, roll-up door systems available in today's highly controlled environments.

EXCEPTIONALLY FAST AND SECURE

Two doors in one, high speed for quick access and high strength for security. Opening speeds of up to 42" per second. Closing speed up to 21" per second.

ULTIMATE DURABILITY

Electric direct drive power system for speed and long life. No springs or complex weight systems required, eliminating maintenance and downtime. Side guides are lined with high density PVC, while the rigid, anodized aluminum slats have nylon windlocks, eliminating metal-to-metal contact between the side guides and slats. No need for roller wheels or other high wear, high maintenance parts. Complete side guide is protected by a 1/4" thick steel guard angle.

MAXIMUM SECURITY

The Hydrarol rigid roll-up door is ideal for any area requiring security. With its rigid slat design, operating speeds of up to 42" per second and reliable operation in the highest cycle applications, the Hydrarol provides the ultimate in protection for your facility.

ENERGY EFFICIENT

Maintaining climate control and reducing energy costs in any facility can be a major challenge. Our insulated slat package coupled with the Hydrarol's high speed operation, will significantly lessen air exchange and reduce energy consumption.

INNOVATIVE DESIGN

With its low profile header and side guides, and electric operator that can be mounted in a variety of configurations, the Hydrarol 109E is ideal for applications with limited headroom and tight side clearances. The curved panel profile, enables the door to roll into a space-saving, compact drum.

UNMATCHED QUALIFICATIONS

With over 40 years of combined experience, our professional sales consulting team will ensure your mission-critical requirements, while maintaining our uncompromising dedication to quality and value added service.

MODEL 109E

Hydrarol™ High-Speed Insulated Rigid Roll-Up Door System



DESIGN AND CONSTRUCTION

DOOR SIZES:

- Up to 16' 0" x 14' 0"
(For additional sizes - consult factory)

PANEL CONSTRUCTION:

- Unitized design.
- Exterior face constructed of anodized aluminum.
- Interior face constructed of rigid PVC.
- Entire slat is foamed in place with high density foam with a "K" factor of .12 at 75°.

OPERATOR FEATURES

- PLC based control panel.
- Two speed operation.
Open - up to 42"/sec.
Close - 21"/sec.
- High output electric direct drive 3 h.p. totally enclosed motor available in 230/460, 3 phase.
- NEMA 4 fiberglass control box.

PERFORMANCE FEATURES:

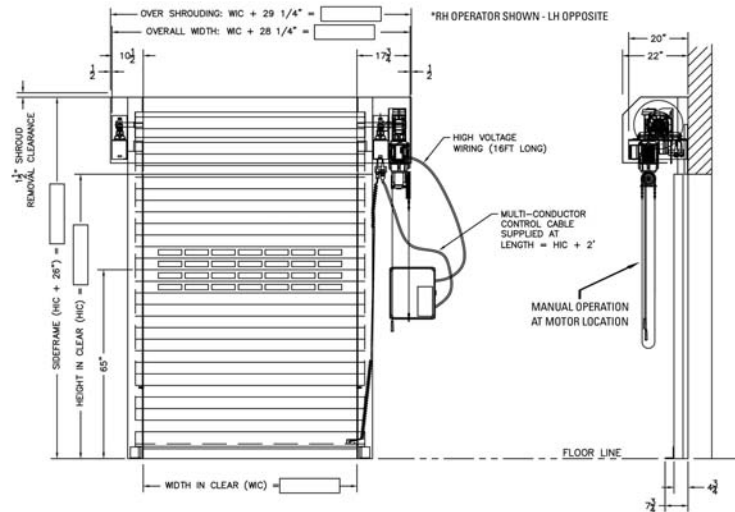
- Reversing edge for instant stop/reverse.
- Send and receive reversing photoeye in the side frames (std).
- Manual chain override (operator side only).

OPTIONS:

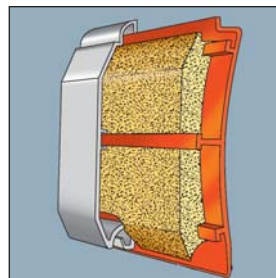
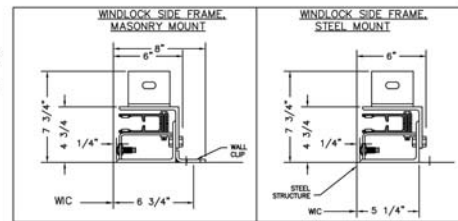
- Light Screen.
- Activation Devices:
 - Pull Cord.
 - Single Push Button.
 - Photoeye.
 - Radio Control.
 - Loop Detector.
 - Pre-announce to close kit (light or alarm/or combo).
 - Motion Detector.
- Adjustable time delay close with auto close feature.
- Custom operator location available.
- Window slats in 4 slat increments. (Custom configurations available.)
- Operator and barrel shrouds.
- Custom colors.
- Complete grille style door in lieu of insulated slats.

WARRANTY:

- One year limited warranty on all components.
- ASI reserves the right to modify specifications without notice.

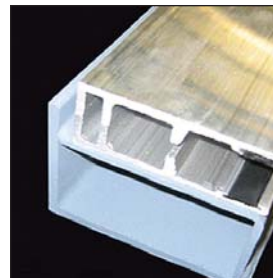


*DRAWING APPLIES TO DOORS UP TO 16' WIDE X 12' HIGH



Dense Polyurethane Foam Insulation

- Seals out winter cold and summer heat.



Nylon Side Guide Strips

- Eliminate metal-to-metal contact with slats.



Optional Polycarbonate Window Slats

- Allow visibility without compromising security.



Optional Grille Style Anodized Aluminum Slats

- Provide security while maintaining air flow.