

CLEANSEAL DOOR SYSTEMS

MODEL 1261 / 1271

Bi-Part Telescoping Seamless Molded
Fiberglass Door System

[MODEL 1271 MANUAL](#) | [MODEL 1261 POWER](#)

EXCEPTIONALLY CLEAN

Totally seamless polyester gel-coat finish. Non-porous, non-shedding, and non-absorptive panel surface. Finish withstands fingerprints, fading, and corroding even when using harsh chemicals such as Vesphene LPH, or SporKlenz. Complete rail and heavy-duty trolley system enclosed in a 16 ga. stainless steel sloped shroud.

ULTRA INTELLIGENT

State-of-the-art direct drive technology. Self-adjusting microprocessor controls and on-board diagnostics. Maintains established operating parameters while consistently diagnosing potential problems. Fully programmable from floor level without removing shroud. Instantly reverses in both directions, while meeting egress entrapment, UL325 and ANSI A156.

ULTIMATE DURABILITY

The clear anodized aluminum rail and heavy-duty trolley system combined with 16 gauge stainless steel side frames and floor hardware provide great strength and reliability. Ideal for tight space restrictions. Durable seamless fiberglass panel, internal steel frame and external stainless steel edge capping. High performance gearless AC Asynchronous drive ensures efficient and continuous operation, minimizing downtime and increasing productivity.

TIGHTEST SEAL

A full perimeter non-marking vinyl gasket, interlocking center seal, and coupled with a bottom sweep gasket ensures the tightest seal. Totally adjustable floor and panel hardware maintains door position under positive and negative pressure without compromising seal.

SUPERIOR PERFORMANCE

Time-tested, the Excel door series has proven to be the benchmark for the strictest clean environment production areas worldwide. Over 10,000 door systems installed globally reflects our experience and customer satisfaction.

ULTRA QUALIFIED

With over 40 years of combined experience, our professional sales consulting team will ensure your mission-critical requirements, while maintaining our uncompromising dedication to quality and value added service.



Bold Innovation. Superior Design. Unsurpassed Quality.

THE INDUSTRY'S UNPARALLELED DOOR SYSTEM OF CHOICE

CleanSeal's revolutionary totally seamless molded fiberglass telescoping door system is designed, engineered and precision manufactured with over 20 years of experience partnering with the leading pharmaceutical companies and architects across the country. Many facilities encounter space constraints where typical sliding doors just won't fit. CleanSeal responded to this critical need and designed the perfect door for limited space areas.

Using cutting-edge technology and exacting criteria for quality, Excel sliding doors have surpassed market demands and exceed cGMP, FDA and EMEA requirements. Our quest for uncompromising quality, and our steadfast commitment to meet our customers' ever-changing expectations, is evident in this one-of-a-kind telescoping door system which has become the ideal solution for limited space applications.

CleanSeal Doors | An ASI Technologies, Inc. Company
5848 North 95th Court | Milwaukee, WI 53225

PHONE: 414.464.6200 | FAX: 414.464.9863 | TOLL-FREE: 800.558.7068

www.cleansaaldors.com

MODEL 1261/1271

Bi-Part Telescoping Seamless Molded Fiberglass Door System

MODEL 1271 MANUAL | MODEL 1261 POWER (SHOWN)

DESIGN AND CONSTRUCTION

DOOR SIZES:

- Manual Door: Up to 8'0" x 8'0".
- Powered Doors: Up to 10'0" x 10'0".
(For additional sizes - consult factory.)

PANEL CONSTRUCTION:

- 1-3/4" thick structural seamless molded fiberglass panels with polyester gel-coat finish. Non-porous, non-shedding, and non-absorptive.
- High-density closed cell poured-in-place polyurethane foam core.
- 20 ga. stainless steel edge capping for added protection and durability.
- Full perimeter gaskets and interlocking center seal. Non-marking gray vinyl, blade type.
- White color standard. (Other colors available on request.)

HEADER/RAIL AND SIDE FRAME CONSTRUCTION:

- Clear anodized aluminum header and rail assembly.
- Complete header and rail enclosed within a 16 ga. 304 #4 stainless steel sloped shroud.
- 16 ga. 304 #4 stainless steel side frames with floor hardware attached (nothing mounted into the floor).
- 316 stainless steel optional.

PERFORMANCE FEATURES:

- Manual Model: Push to open/push to close.
- Power Model: A gearless AC Asynchronous motor continuously maintains peak performance by utilizing an on-board, self-adjusting microprocessor control system. Complete system is programmable from floor level without removing the shrouds.
- Standard pushplate to open - time delay to close.
- Standard circuitry allows door to "reverse upon obstruction" by monitoring both directions of door travel.
- Standard dual side frame mounted reversing photoeyes.
- In case of power failure, power doors can be manually operated at any time.

OPTIONS:

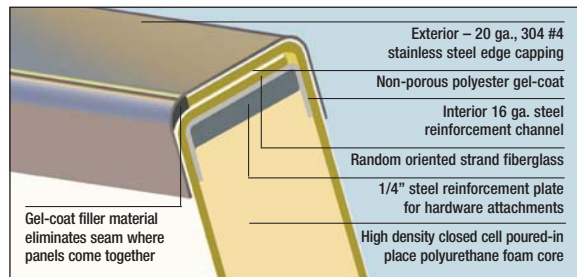
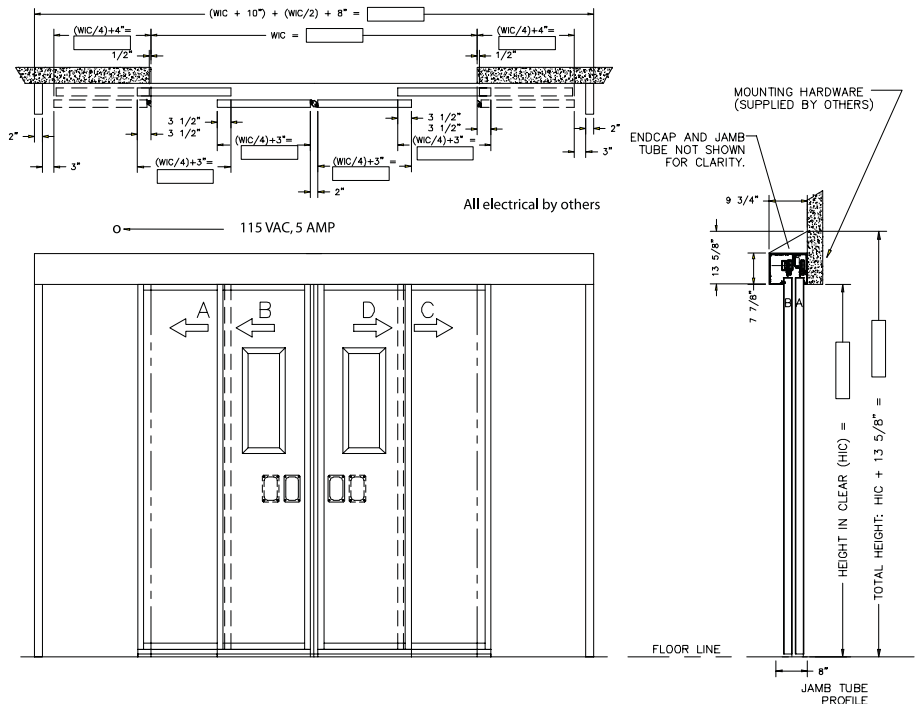
- Vision panel with standard sloped frame.
- CleanView® flush vision panel.
- 304 or 316 #4 stainless steel clad panel.
- Custom color (consult factory).

OPTIONS (POWER MODELS ONLY):

- Activation devices mounted in door panel (wireless only).
- Touchless activation switches.
- Custom designed interlocking system.
- Actuators: Variety of activation devices available upon request.
- Pre-announce to close kit (light/alarm/or combo).

WARRANTY:

- One year limited warranty on all components.



MOLDED FIBERGLASS CONSTRUCTION

Our exclusive process utilizing polyester gel-coat, offers a fiberglass door that is truly seamless. CleanSeal fiberglass doors are built to a higher standard so they withstand the harshest conditions and still look great year after year.



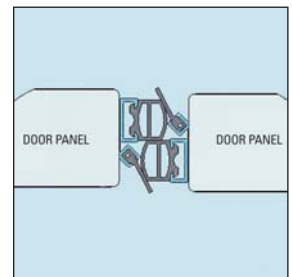
OPTIONAL FLUSH VISION PANEL

The CleanView® flush vision panel is the ultimate in clean technology design.



SEAMLESS FIBERGLASS PANEL

Totally corrosion-resistant and 100% non-porous.



BI-PART SLIDING DOOR CENTER SEAL

Unique double-interlocking center seal provides a complete seal and prevents panel separation under positive or negative pressures.

THE PIONEER OF CLEAN ENVIRONMENT TECHNOLOGY

CleanSeal Doors | An ASI Technologies, Inc. Company
5848 North 95th Court | Milwaukee, WI 53225
PHONE: 414.464.6200 | FAX: 414.464.9863 | TOLL-FREE: 800.558.7068
www.cleansealdoors.com