

MODEL 1290

Vertical Rise Seamless Molded Fiberglass Power Door System



Bold Innovation. Superior Design. Unsurpassed Quality.

THE INDUSTRY'S UNPARALLELED DOOR SYSTEM OF CHOICE.

Cleanseal's revolutionary totally seamless molded fiberglass vertical rise door is designed, engineered and precision manufactured with over 20 years of experience partnering with the leading pharmaceutical companies and architects across the country.

Using cutting-edge technology and exacting criteria for quality, Excel sliding doors have surpassed market demands and exceed cGMP, FDA and EMEA requirements. Our quest for uncompromising quality, and our steadfast commitment to meet our customers' ever-changing expectations, is evident in the performance, functionality, and beauty of this exclusive vertical rise door system.

■ EXCEPTIONALLY CLEAN

Totally seamless polyester gel-coat finish. Non-porous, non-shedding, and non-absorptive panel surface. Finish withstands fingerprints, fading, and corroding when using harsh chemicals such as Vesphene, LPH, or SporKlenz. Exclusive all stainless steel track and nylon roller assemblies, enclosed within a 304 #4 stainless steel swing-out panel system. Exceeds cGMP, FDA and EMEA requirements.

■ ULTRA INTELLIGENT

Heavy-duty electromechanical operator-PLC/VFD controlled to provide the most reliable operation. Manual operation during unexpected power outages or emergencies allows for maximum security and functionality. Our SofTouch™ electric reversing edge stops and reverses instantly when encountering any interference with travel of door.

■ ULTIMATE DURABILITY

Exclusive all-stainless steel (no aluminum or other soft metals) heavy-duty track and nylon roller assembly. 12 ga. stainless side frames and 7 gauge header/motor assembly. Ideal for conveyor systems and transporter traffic. Durable fiberglass reinforced composite panel, internal steel frame and external stainless steel edge capping. 1/4 h.p. heavy-duty electromechanical operator, nylon rollers, and stainless steel chain drive.

■ TIGHTEST SEAL

Continuous three-sided urethane gasket with bottom floor gasket.

■ MAXIMUM SECURITY

Variety of electronic and mechanical locking options to meet strictest FDA/DEA requirements. Cleanseal will design and supply state-of-the-art interlocking system from basic two door interlock to entire production floor.

■ SUPERIOR PERFORMANCE

Time-tested, the Excel door series has proven to be the benchmark for the strictest clean environment production areas worldwide. Over 10,000 door systems globally ensure our experience and customer satisfaction.

■ UNMATCHED QUALIFICATIONS

Over 40 years of combined experience, our professional sales consulting team can assure your mission-critical requirements will be expertly addressed while maintaining our uncompromising dedication to quality and value added service.

MODEL 1290

Vertical Rise Seamless Molded Fiberglass Power Door System

DESIGN AND CONSTRUCTION

DOOR SIZES:

- Powered Doors: Up to 8'0" x 8'0".
(For additional sizes - consult factory.)

PANEL CONSTRUCTION:

- Structural molded seamless fiberglass panel with polyester gel-coat finish. Non-porous, non-shedding, and non-absorptive.
- High density closed cell poured-in-place polyurethane foam core.
- 20 gauge stainless steel edge capping for added protection and durability.
- Full perimeter gaskets: Non-marking gray vinyl.
- White color standard. (Other colors available on request.)

HEADER/RAIL AND SIDE FRAME CONSTRUCTION:

- Heavy-duty 12 gauge, 304 #4 stainless steel side frames with integral stainless steel track.
- 7 gauge, 304 #4 stainless steel header/motor assembly.
- 16 gauge, 304 #4 stainless steel swinging maintenance panel and removable operator access cover.
- Complete system capable of mounting within the jamb or face mounted on the wall.

PERFORMANCE FEATURES:

- 1/4 h.p. heavy-duty electromechanical operator - PLC/VFD controlled. Mounted in separate NEMA 4X control box.
- Manual operation during unexpected power outages.
- SofTouch™ electric reversing edge for instant stop and reverse.
- Standard pushplate to open, time delay to close.

OPTIONS:

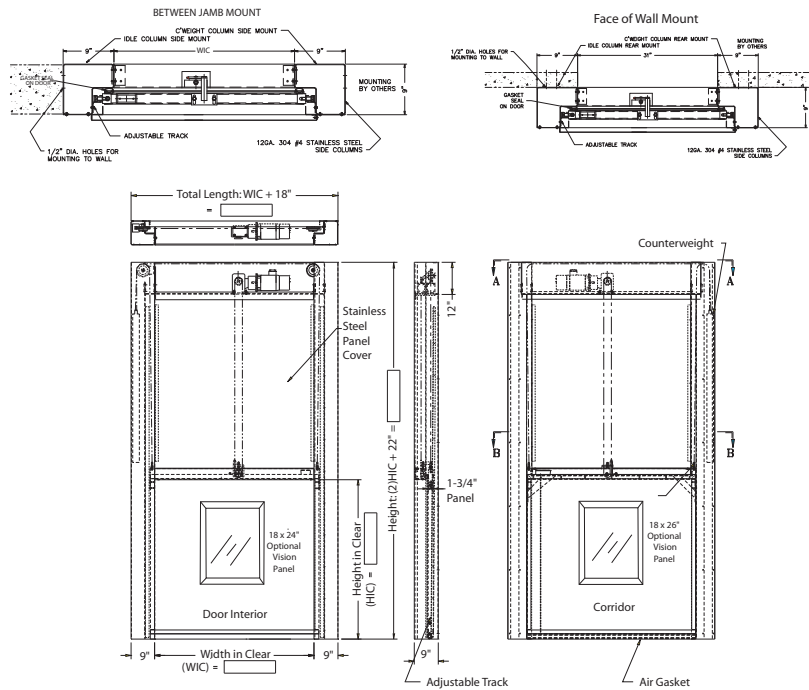
- Vision panel with standard sloped frame.
- CleanView® flush vision panel.
- 304 or 316 #4 stainless steel clad panel.
- Custom color (consult factory).

(POWER MODELS ONLY):

- Touchless activation switches.
- Custom designed interlocking system.
- Actuators: Variety of activation devices available upon request.
- Pre-announcement to close kit (light/alarm/or combo).

WARRANTY:

- One year limited warranty on all components.
- ASI reserves the right to modify specifications without notice.

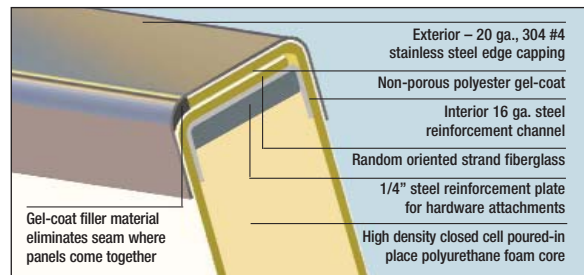


OPTIONAL FLUSH VISION PANEL

The CleanView® flush vision panel is the ultimate in clean technology design.



SEAMLESS FIBERGLASS PANEL
Totally corrosion-resistant and 100% non-porous.



MOLDED FIBERGLASS CONSTRUCTION

Our exclusive process utilizing polyester gel-coat, offers a fiberglass door that is truly seamless. Cleanseal fiberglass doors are built to a higher standard so they withstand the harshest conditions and still look great year after year.

THE PIONEER OF CLEAN ENVIRONMENT TECHNOLOGY

Cleanseal Doors | An ASI Technologies, Inc. Company
5848 North 95th Court | Milwaukee, WI 53225

PHONE: 414.464.6200 | FAX: 414.464.9863 | TOLL-FREE: 800.558.7068

www.cleansaaldors.com