

## MODEL 130/135

Paired Swinging Fiberglass Door System

[MODEL 130 MANUAL](#) | [MODEL 135 POWER](#)

Shown with optional kickplates, vision panels and pultruded fiberglass frame



Innovative Design. Superior Quality. Exceptional Value.

### THE INDUSTRY'S TOP PERFORMING VALUE ENHANCED DOOR SYSTEM

The accelerated rate of change in clean manufacturing practices, coupled with increased regulation and competitive market forces, has put increasing pressure on facility budgets. Performance and value have become inseparable key words for manufacturers worldwide. Companies producing supplements, nutraceuticals, medical devices, over-the-counter formulations, and many others, face new challenges within their facilities as regulators expand their focus beyond traditional pharmaceutical and biotechnology manufacturing. The LXP series of doors provides the solution to these new challenges.

Superior aesthetics, uncompromising quality, exceptional reliability and unmatched value define the LXP doors. Designed from the ground up to far exceed the offerings of other door manufacturers, yet priced to meet demanding budget constraints, the LXP is truly the "no compromise" clean door solution.

#### ■ EXCEPTIONAL VALUE

High strength, clean and durable fiberglass door panel. The exclusive mitered corners of the frame are face welded, then painstakingly ground and polished to an unmatched finish. Built with superior quality and reliability, this door offers proven design, functionality and exceptional value.

#### ■ INNOVATIVE CONSTRUCTION

The LXP series provides durable fiberglass panels with reinforced finished edges. Hardware locations are also reinforced with solid resin pultruded fiberglass. Face welded, 16 ga., 304 #4 stainless steel frame provides maximum strength, cleanability and corrosion resistance.

#### ■ TIGHT SEAL

Utilizing a frame mounted, continuous three-sided perimeter gasket, coupled with a bottom sweep gasket and panel mounted center astragals.

#### ■ SECURE INTERLOCKS

Variety of electronic and mechanical locking options to meet the strictest FDA/DEA requirements. Cleanseal will design and supply a state-of-the-art interlocking system from the basic two door interlock to an entire production floor.

#### ■ TURNKEY SYSTEM

Cleanseal provides a complete door system from panel choice, frame design, hardware selection, and interlocking design, to complement any environment. This ensures an uninterrupted process in completing your project by maintaining a single source relationship.

#### ■ QUALIFIED

With over 40 years of combined experience, our professional sales consulting team will ensure your mission-critical requirements, while maintaining our uncompromising dedication to quality and value added service.

# MODEL 130/135

## Paired Swinging Fiberglass Door System

MODEL 130 MANUAL | MODEL 135 POWER (SHOWN)

### DESIGN AND CONSTRUCTION

#### STANDARD SIZES:

- Up to 8' x 9'.  
(For larger sizes, consult factory.)

#### PANEL CONSTRUCTION:

- 1-3/4" thick fiberglass panel surface with finished edges of reinforced, pultruded fiberglass.
- All hinge and hardware locations reinforced with solid resin pultruded fiberglass.
- Standard white color. (Other colors available upon request.)

#### FRAME CONSTRUCTION:

- 16 ga., 304 #4 stainless steel, face welded and polished.
- Available in either single or double rabbet construction.
- Prepped for a wide variety of hardware options.

#### HARDWARE:

- Grade 1 Architectural hardware standard:
  - Hager BB1191 standard weight stainless steel fully mortised hinges.
  - LCN 4041 heavy-duty closer.
  - Stainless steel push/pull hardware.
  - Frame mounted, three sided bulb type perimeter gasket and bottom sweep gasket.

#### PERFORMANCE FEATURES:

- Manual open with standard spring assist closer.
- Power operation utilizing an electromechanical operator, microprocessor controlled in 120 volt, single phase, with mechanical spring close.
- Operator completely enclosed within an aluminum flat top shroud.
- Overhead presence sensor to provide threshold and swing side obstruction detection.
- Pushplate to open; time delay to close.
- In case of power failure, door can be opened manually at any time.

#### OPTIONS:

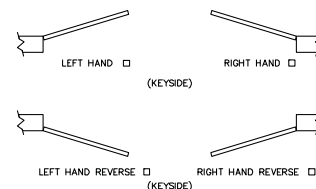
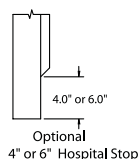
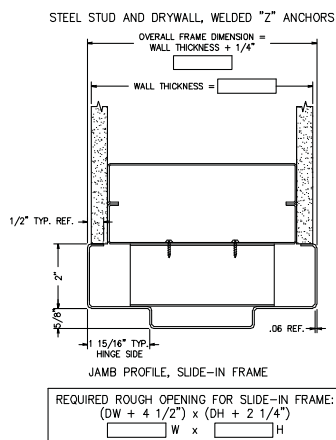
- Vision panel with standard sloped frame.
- UL fire rated.
- Knock-down frame of pultruded fiberglass construction.
- All stainless steel construction available in 316L.
- 14 ga. stainless steel frames.
- Stainless steel clad panel. (Fire rated and non-rated.)
- Custom designed interlocking system.
- Hospital stops 4" or 6".
- Stainless steel closer cover.
- Can provide any major lines and grades of architectural hardware.

#### OPTIONS (POWER MODELS ONLY):

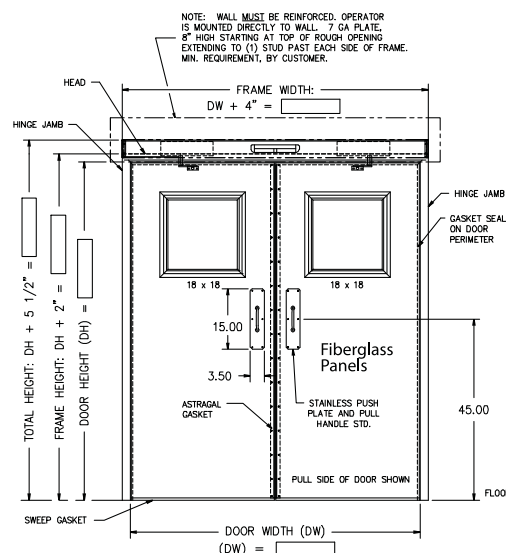
- Touchless wall-mounted activation switch.
- Actuators: Variety of activation devices available upon request.

#### WARRANTY:

- One year limited warranty on all parts and labor.
- ASI reserves the right to modify specifications without notice.



All electrical by others



#### FRAME ASSEMBLY

Fully mitered and completely welded through the throat. Single or double rabbet.



#### SLOPED SHROUD FOR POWER UNITS

For superior cleanliness and aesthetic appeal.



#### STAINLESS STEEL CLOSER COVER

(Shown on stainless steel fire door)  
Another option for superior cleanliness and aesthetic appeal.



#### FULLY MORTISED HINGES

(Shown on stainless steel door)  
Flush mortised hinges provide a clean and smooth finish to the door.

#### THE PIONEER OF CLEAN ENVIRONMENT TECHNOLOGY

Cleanseal Doors | An ASI Technologies, Inc. Company  
5848 North 95th Court | Milwaukee, WI 53225  
PHONE: 414.464.6200 | FAX: 414.464.9863 | TOLL-FREE: 800.558.7068  
www.cleansaaldors.com