

## MODEL 245/255

Single Sliding Stainless Steel U.L. Rated  
Fire Door System (Up to 90 Minute "B"Label)

[MODEL 245 MANUAL](#) | [MODEL 255 POWER](#)



**Bold Innovation. Superior Design. Unsurpassed Quality.**

### THE INDUSTRY'S UNPARALLELED DOOR SYSTEM OF CHOICE

CleanSeal's revolutionary U.L. rated stainless steel sliding fire door system is designed, engineered and precision manufactured with over 20 years of experience partnering with the leading pharmaceutical companies and architects across the country. It was apparent that this industry was looking for a comparable product to meet the performance and beauty of the standard sliding cleanroom doors, but be fire rated. CleanSeal exceeded the market's expectations with the Excel fire door system offering exceptional performance, U.L. compliance, and beauty to complement any cleanroom environment.

Using cutting-edge technology and exacting criteria for quality, Excel sliding doors have surpassed market demands and exceed cGMP, FDA and EMEA requirements. Our quest for uncompromising quality, and our steadfast commitment to meet our customers' ever-changing expectations, is evident in the ultimate design and beauty of the Excel fire door system.

#### ■ EXCEPTIONALLY CLEAN

16 ga., 304 #4 stainless steel panel will not fade or corrode, even when exposed to chemical cleansing agents. Exclusive all stainless steel track and trolley assemblies are enclosed in a stainless steel sloped shroud exceeding cGMP, FDA and EMEA requirements.

#### ■ ULTIMATE DURABILITY

Exclusive all-stainless steel (no aluminum or other soft metals) heavy-duty rail and trolley assembly. 16 ga. stainless side frames and floor hardware. Ideal for cart, tank and transporter traffic. Heavy-duty stainless steel panel, internal steel frame and external stainless steel edge capping. High efficiency 1/4 hp electromechanical operator, heavy-duty nylon roller wheels, and a Kevlar reinforced drive belt, ensures efficient and continuous operation, minimizing downtime and increasing productivity.

#### ■ TIGHTEST SEAL

Continuous three-sided non-marking vinyl gasket, and bottom sweep gasket ensures the tightest seal. Floor hardware maintains door position under positive and negative pressures without compromising seal. Totally adjustable floor and panel hardware.

#### ■ SUPERIOR PERFORMANCE

Time-tested, the Excel door series has proven to be the benchmark for the strictest clean environment production areas worldwide. Over 10,000 door systems installed globally reflects our experience and customer satisfaction.

#### ■ U.L. COMPLIANT

Stainless steel panels are manufactured to meet U.L.10B Classification and power operator is compliant to U.L. 325 Classification.

#### ■ UNMATCHED QUALIFICATIONS

With over 40 years of combined experience, our professional sales consulting team will ensure your mission-critical requirements, while maintaining our uncompromising dedication to quality and value added service.



# MODEL 245/255

Single Sliding Stainless Steel U.L. Rated  
Fire Door System (Up to 90 Minute "B" Label)

MODEL 245 MANUAL | MODEL 255 POWER (SHOWN)

## DESIGN AND CONSTRUCTION

### DOOR SIZES:

- Manual: Up to 6'0" x 8'0".
- Powered: Up to 8'0" x 9'0".  
(For additional sizes - consult factory.)

### PANEL CONSTRUCTION:

- 1 3/4" thick 16 ga., 304 #4 stainless steel U.L. rated panel.
- 20 ga. stainless steel edge capping for added protection and durability.
- Full perimeter gaskets: Non-marking gray vinyl, blade type.

### HEADER/RAIL AND SIDE FRAME CONSTRUCTION:

\*(See illustration to right - exclusive to CleanSeal doors)

- 12 ga. 304 #4 stainless steel header with 3/16" stainless steel rail assembly.
- 7 ga. stainless steel trolley assemblies.
- Complete header and rail enclosed within a 16 ga. 304 #4 stainless steel sloped shroud.
- 16 ga. 304 #4 stainless steel side frames with floor hardware attached (nothing mounted into the floor).
- 316 stainless steel optional.

### PERFORMANCE FEATURES:

- Manual Model: Slide to open/slide to close.
- Stainless steel fusible link.
- Adjustable closing speed spring closure closes door upon release of fusible link.
- Power Model: 1/4 hp electromechanical operator with NEMA 4X control box. Alternate power source must be provided by customer; or optional battery back-up for emergency operation in case of fire.
- Standard pushplate to open - time delay to close.
- Reversing edge for instant stop and reverse.
- Standard dual side frame mounted reversing photoeyes.

### OPTIONS:

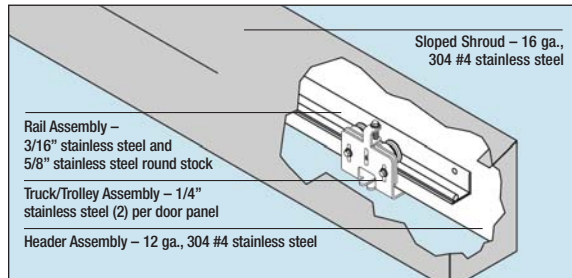
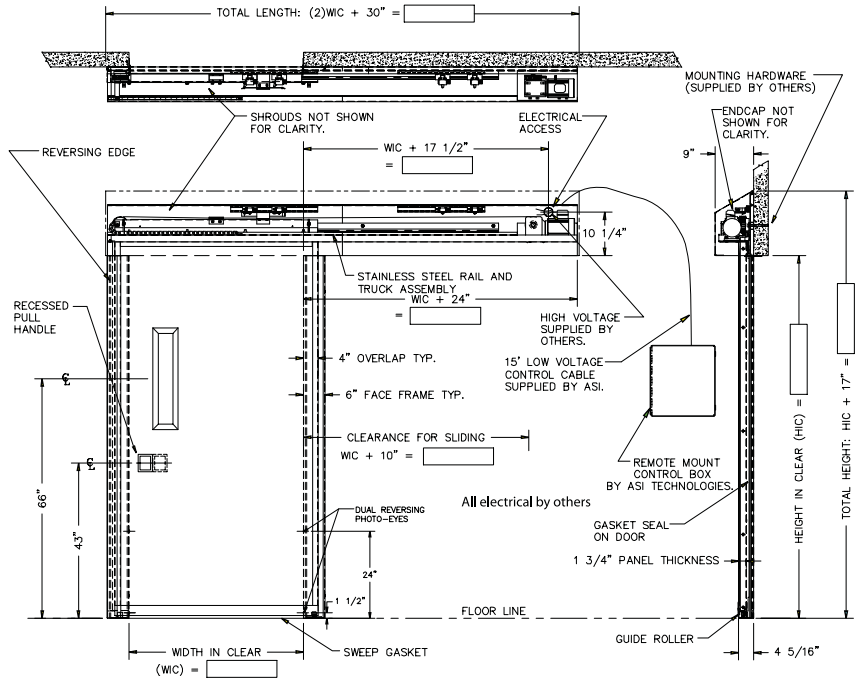
- U.L. rated vision panel with standard U.L. rated sloped frame (size and material subject to U.L. guidelines).

### OPTIONS (POWER MODELS ONLY):

- Touchless activation switches.
- Custom designed interlocking system.
- Actuators: Variety of activation devices available upon request.
- Pre-announce to close kit (light/alarm/or combo).
- Alternate battery back-up power source.
- Heat detector fire system.

### WARRANTY:

- One year limited warranty on all components.



### \*STANDARD EXCEL SERIES HEADER AND RAIL ASSEMBLY

For superior cleanability, durability and aesthetic appeal.



### COMPLETE STAINLESS PACKAGE

Our all stainless steel fire door provides the ultimate in sealing and cleanability. The tight fitting components and superior finish complement any environment.

### THE PIONEER OF CLEAN ENVIRONMENT TECHNOLOGY

CleanSeal Doors | An ASI Technologies, Inc. Company  
5848 North 95th Court | Milwaukee, WI 53225  
PHONE: 414.464.6200 | FAX: 414.464.9863 | TOLL-FREE: 800.558.7068  
[www.cleansealdoors.com](http://www.cleansealdoors.com)